

Seshadripuram Educational Trust
SESHADRIPURAM ACADEMY OF BUSINESS STUDIES
(Affiliated to Bangalore University)
NAAC Accredited 'B' Grade
Kengeri Satellite Town, Bengaluru- 560060.

STUDENT SATISFACTION SURVEY

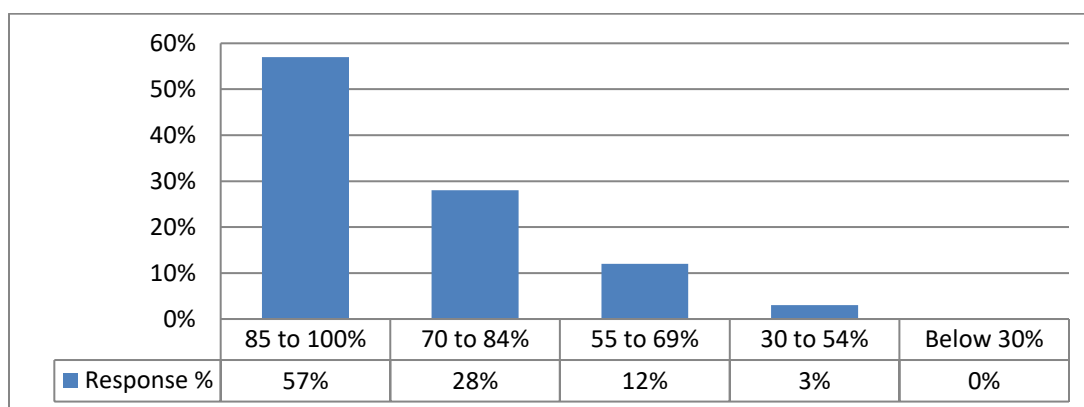
(2020-21)

1. How much of the syllabus was covered in the class?

Particular	No. of Responses	Response %
85 to 100%	110	57%
70 to 84%	55	28%
55 to 69%	25	12%
30 to 54%	05	03%
Below 30%	0	00%

Analysis:

The table shows the response collected by students on the syllabus completion process.



Interpretation:

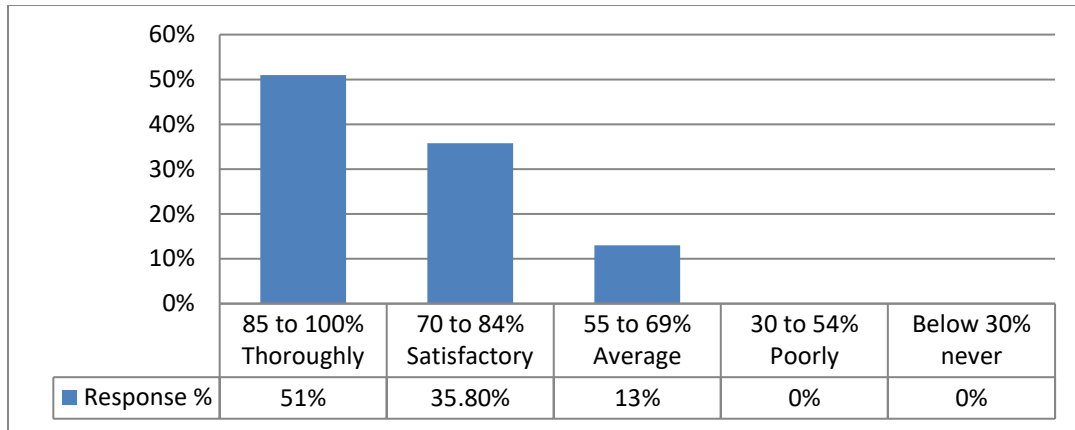
From the above table, 57% students were responded with 85-100 percent syllabus completion 28% students agree with 70-84 percent syllabus completion and the remaining 15% students responded that less than 69 percent syllabus completion.

2. How well did the teachers prepare for the classes?

Particular	No. of Responses	Response %
85 to 100%	100	51%
70 to 84%	70	35.8%
55 to 69%	25	13%
30 to 54%	00	00%
Below 30%	00	00%

Analysis:

The table shows the response of students on the subject preparation level of a teacher.



Interpretation:

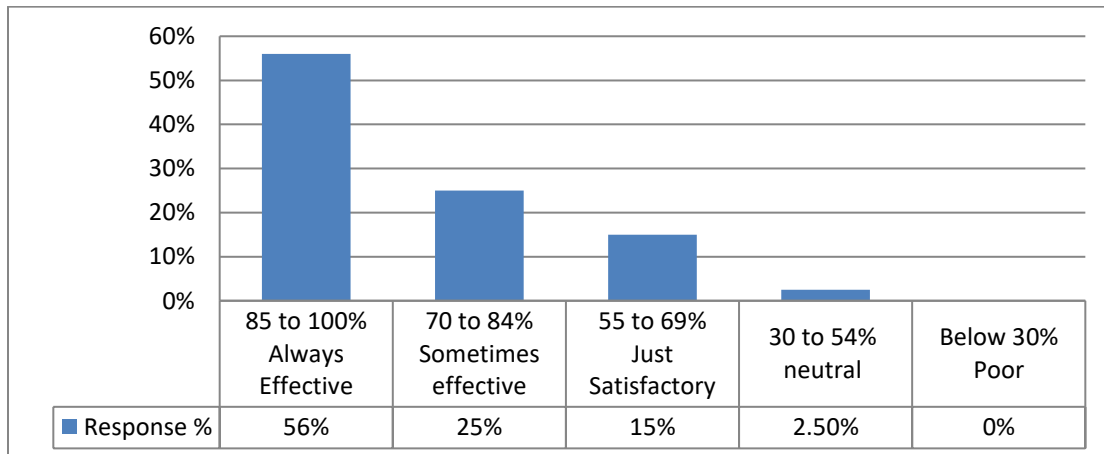
From the above table and graph, it shows that 60% respondents agree with 85-100% teachers are thoroughly prepared, 36% respondents agree with 70-84 percent are satisfactory and 15% respondents agree to 69 percent and less are average preparation for class.

3. How well were the teachers able to communicate?

Particular	No. of Responses	Response %
85 to 100%	110	56%
70 to 84%	50	25%
55 to 69%	30	15%
30 to 54%	05	2.5%
Below 30%	00	00%

Analysis:

The table shows the response of students on how well were the teachers able to communicate.



Interpretation:

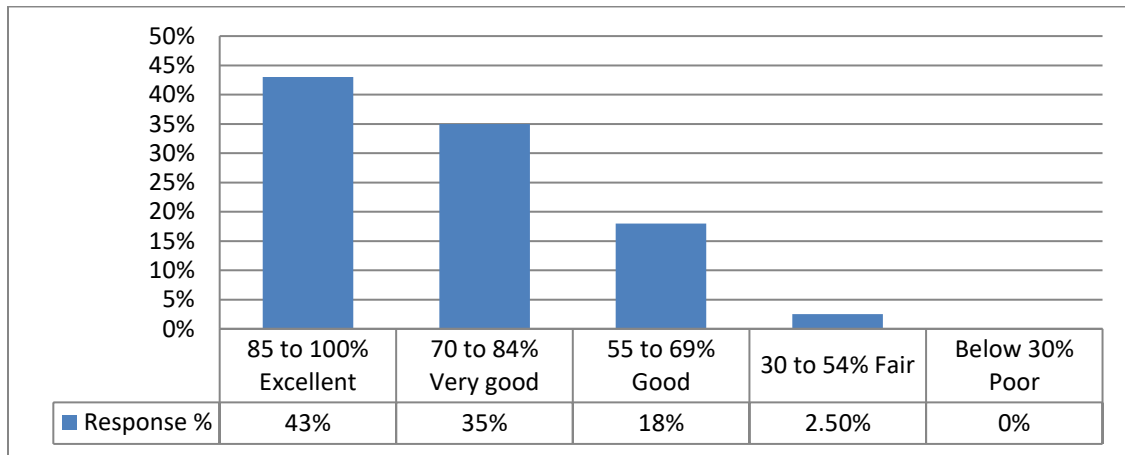
From the above table and graph, where 56% respondents agree with 85-100 percent teachers are always effective, 25% respondents agree with 70-84 percent sometimes effective and 18% agree to 69 percent respondents are just satisfactory and Neutral.

4. The teacher’s approach to teaching can best be described as:

Particular	No. of Responses	Response %
85 to 100%	85	43%
70 to 84%	70	35%
55 to 69%	35	18%
30 to 54%	05	2.5%
Below 30%	00	0%

Analysis:

The table shows the response of students on teacher’s approach to teaching.



Interpretation:

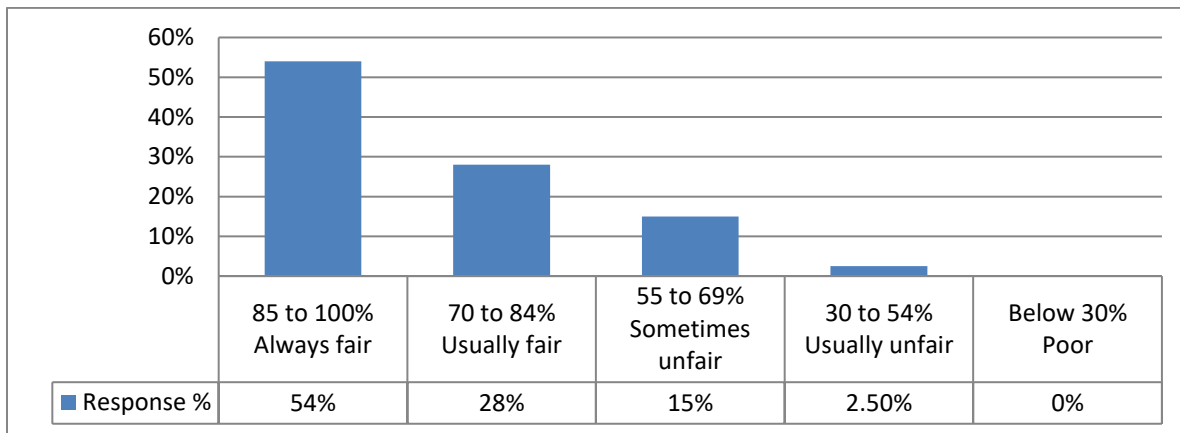
From the above table and graph, where 43% students agree with 85-100 percent are Excellent teacher’s approach to teaching, 35% students agree with 70-84 percent Very good and 21% agree to 69 percent and less good and fair.

5. Fairness of the internal evaluation process by the teachers.

Particular	No. of Responses	Response %
85 to 100%	105	54%
70 to 84%	55	28%
55 to 69%	30	15%
30 to 54%	05	2.5%
Below 30%	00	0%

Analysis:

The table shows the response of students on Fairness of the internal evaluation process by the teachers.



Interpretation:

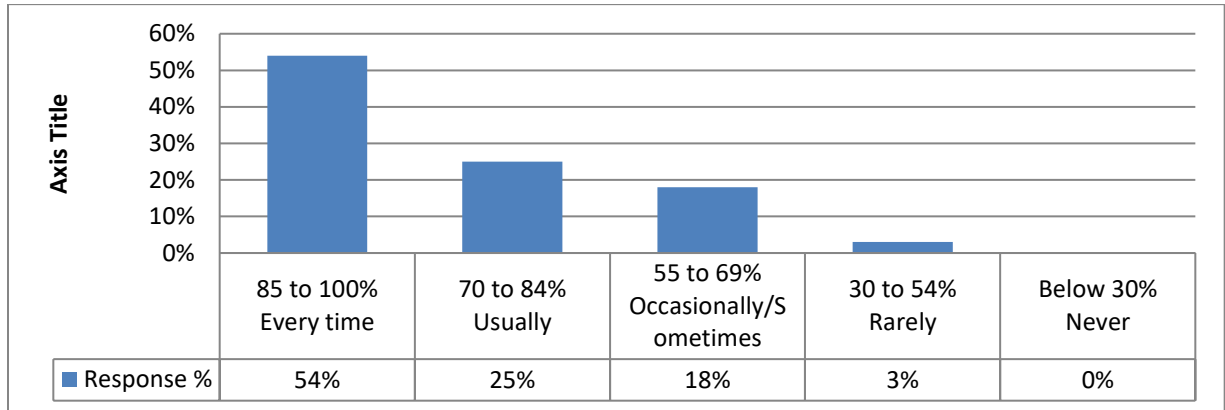
From the above table and graph, where 54% students agree with 85-100 percent Always fair, 28% students agree with 70-84 percent Usually fair and 18% agree to 69 percent and less sometimes unfair and usually unfair.

6. Was your performance in assignments discussed with you?

Particular	No. of Responses	Response %
85 to 100%	105	54%
70 to 84%	50	25%
55 to 69%	35	18%
30 to 54%	05	3%
Below 30%	00	00%

Analysis:

The table shows the response of students on scrutiny of their performance in assignments.



Interpretation:

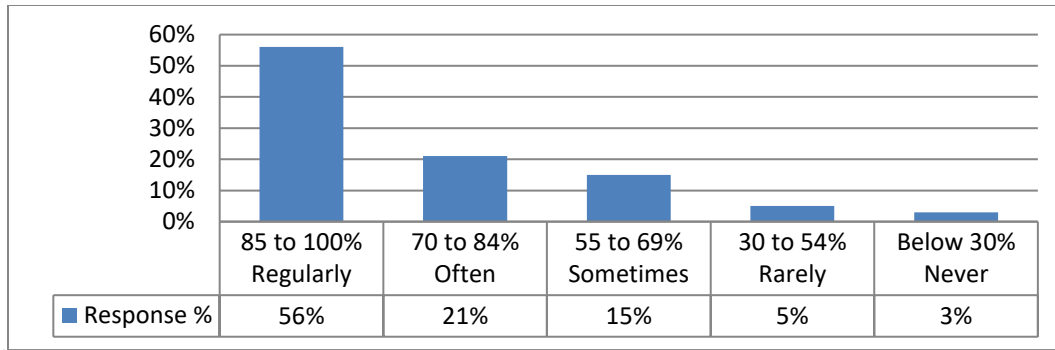
From the above table and graph, where 54% students agree with 85-100 percent Every time, 25% students agree with 70-84 percent usually and 21% agree to 69 percent and less Occasionally/Sometimes and rarely.

7. The institute takes active interest in promoting internship, student exchange, field visit opportunities for students.

Particular	No. of Responses	Response %
85 to 100%	110	56%
70 to 84%	40	21%
55 to 69%	30	15%
30 to 54%	10	5%
Below 30%	05	3%

Analysis:

The table shows the response of students on the institution's interest in promoting internship, student exchange, and field visit opportunities for students.



Interpretation:

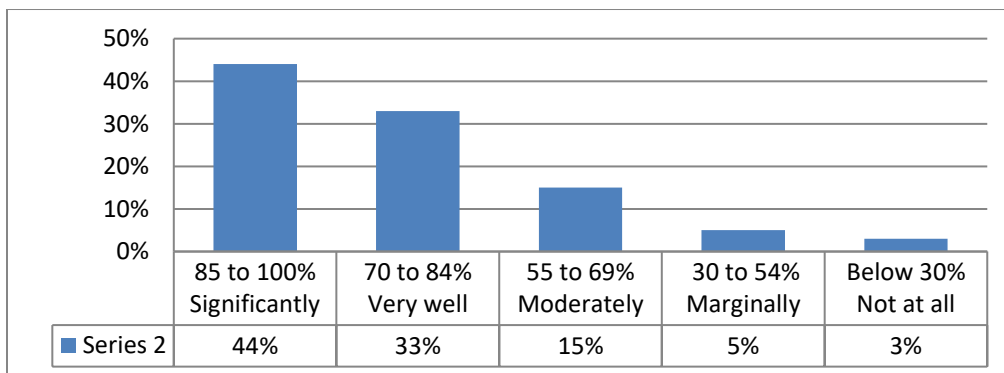
From the above table and graph, where 56% students agree with 85-100 percent Regularly promoting internship, student exchange, and field visit opportunities for students. 21% students agree with 70-84 percent often and 23% agree to 69 percent and less sometimes and rarely.

8. The teaching and mentoring process in your institution facilitates you in cognitive, social and emotional growth.

Particular	No. of Responses	Response %
85 to 100%	85	44%
70 to 84%	65	33%
55 to 69%	30	15%
30 to 54%	10	5%
Below 30%	05	3%

Analysis:

The table shows the response of students on the teaching and mentoring process by the institution in cognitive, social and emotional growth.



Interpretation:

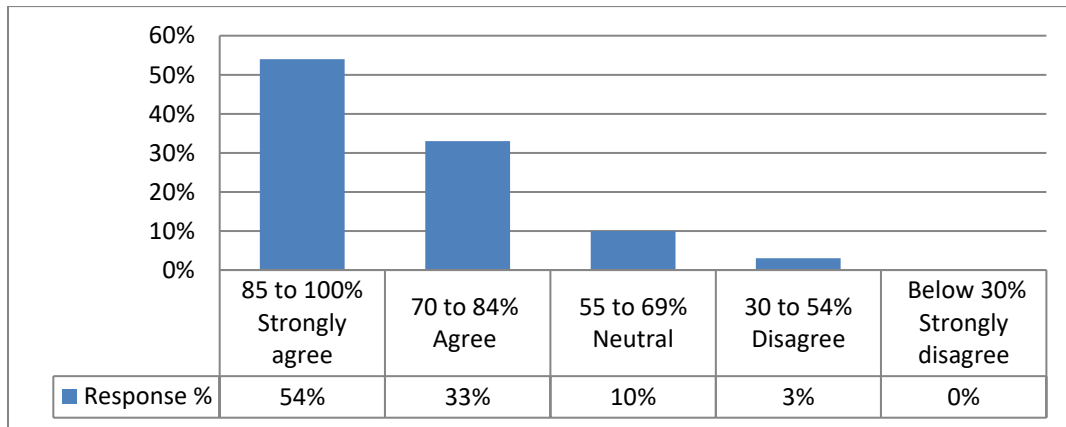
From the above table and graph, where 44% students agree with 85-100 percent significantly the teaching and mentoring process by the institution in cognitive, social and emotional growth, 33% students agree with 70-84 percent very well and 23% agree to 69 percent and less moderately and marginally.

9. The institution provides multiple opportunities to learn and grow.

Particular	No. of Responses	Response %
85 to 100%	105	54%
70 to 84%	65	33%
55 to 69%	20	10%
30 to 54%	05	3%
Below 30%	00	0%

Analysis:

The table shows the response of students on providing multiple opportunities to learn and grow by the institution.



Interpretation:

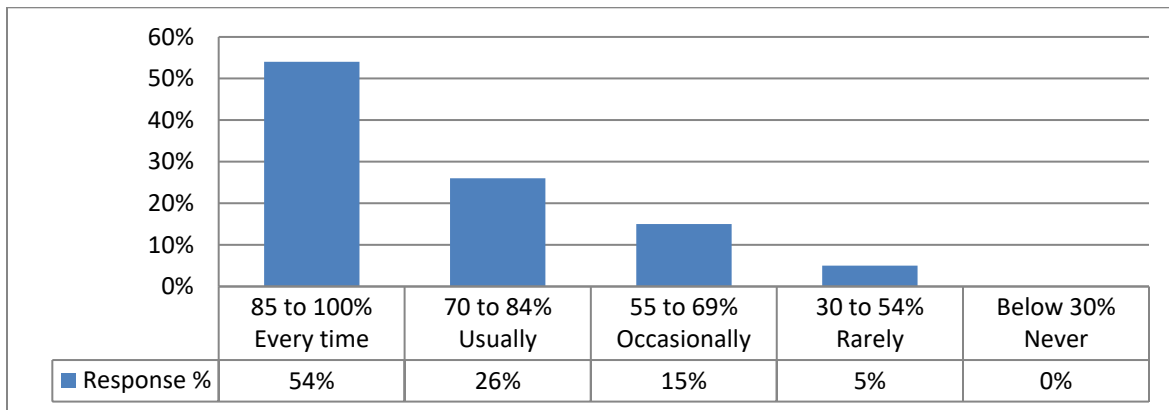
From the above table and graph, where 54% students agree with 85-100 percent Strongly agree that students are provided with multiple opportunities to learn and grow by the institution, 33% students agree with 70-84 percent agree and 13% agree to 69 percent and less are neutral and disagree.

10. Teachers inform you about your expected competencies, course outcomes and programme outcomes.

Particular	No. of Responses	Response %
85 to 100%	105	54%
70 to 84%	50	26%
55 to 69%	30	15%
30 to 54%	10	5%
Below 30%	00	0%

Analysis:

The table shows the response of students on Teacher informing about students expected competencies, course outcomes and programme outcomes.



Interpretation:

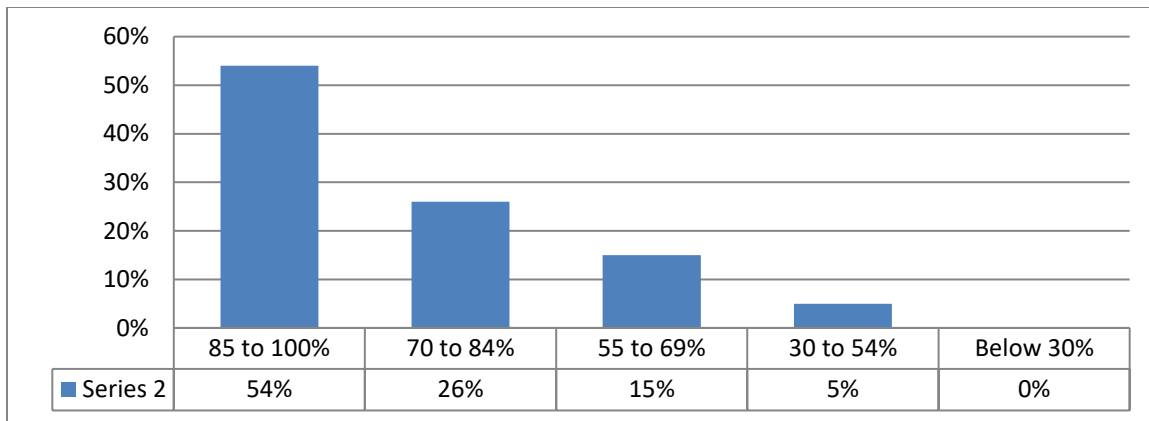
From the above table and graph, where 54% students agree with 85-100 percent every time Teacher informing about students expected competencies, course outcomes and programme outcomes, 26% students agree with 70-84 percent usually and 15% agree to 69 percent and less occasionally and rarely.

11. Your mentor does a necessary follow-up with an assigned task to you.

Particular	No. of Responses	Response %
85 to 100%	105	54%
70 to 84%	50	26%
55 to 69%	30	15%
30 to 54%	10	5%
Below 30%	00	0%

Analysis:

The table shows the response of students on mentor following up students on assigned task.



Interpretation:

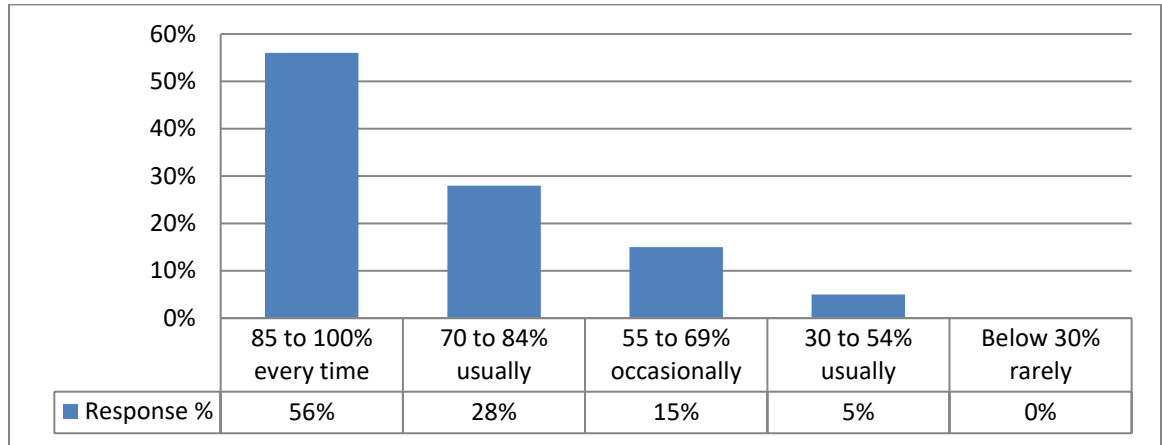
From the above table and graph, where 54% students Strongly agree with 85-100 percent mentor following up students on assigned task, 26% students agree with 70-84 percent and the rest 20% agree to 69 percent and less neutral and disagree.

12. The teachers illustrate the concepts through examples and applications.

Particular	No. of Responses	Response %
85 to 100%	110	56%
70 to 84%	55	28%
55 to 69%	30	15%
30 to 54%	10	5%
Below 30%	00	0%

Analysis:

The table shows the response of students on teachers illustrate the concepts through examples and applications.



Interpretation:

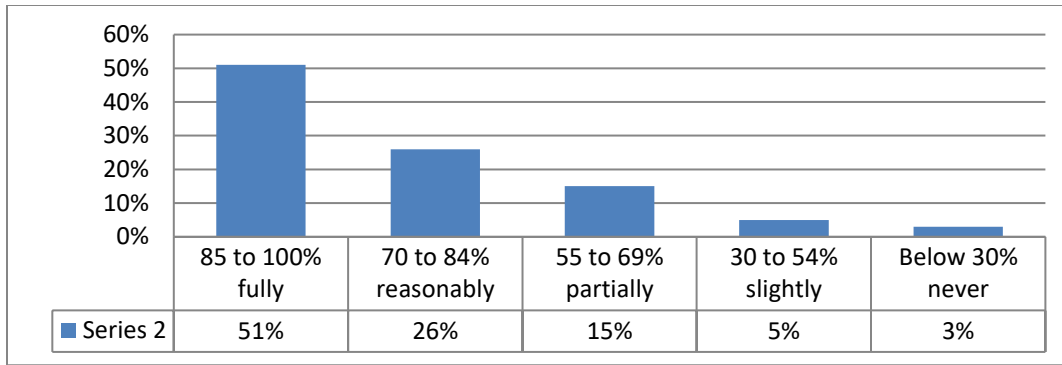
From the above table and graph, where 56% students agree with 85-100 percent that teachers illustrate the concepts through examples and applications, 28% students agree with 70-84 percent usually teachers illustrate the concepts through examples and applications and 20% agree to 69 percent and less occasionally and rarely.

13. The teachers identify your strengths and encourage you with providing right level of challenges.

Particular	No. of Responses	Response %
85 to 100%	100	51%
70 to 84%	50	26%
55 to 69%	30	15%
30 to 54%	10	5%
Below 30%	05	3%

Analysis:

The table shows the response of students on teachers identifying student’s strengths and encouraging them with providing right level of challenges.



Interpretation:

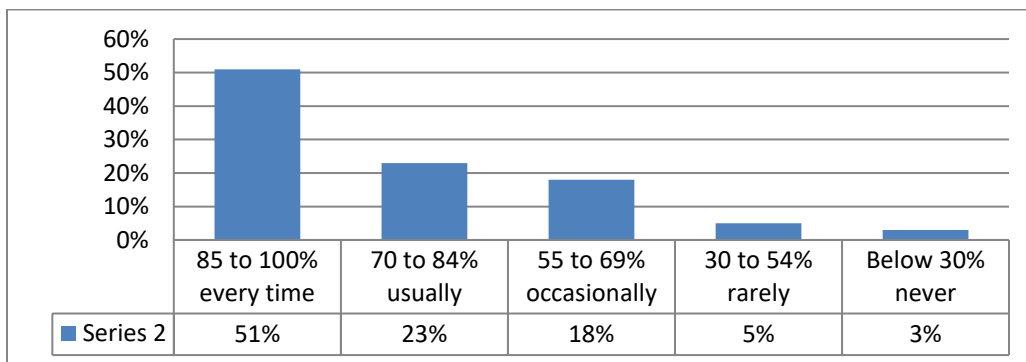
From the above table and graph, where 51% students agree with 85-100 percent on teachers identifying student’s strengths and encouraging them with providing right level of challenges, 26% students agree with 70-84 percent reasonably and 23% agree to 69 percent and less partially and slightly.

14. Teachers are able to identify your weaknesses and help you to overcome them.

Particular	No. of Responses	Response %
85 to 100%	100	51%
70 to 84%	45	23%
55 to 69%	35	18%
30 to 54%	10	5%
Below 30%	05	3%

Analysis:

The table shows the response of students on teacher’s ability to identify student’s weaknesses and help them to overcome it.



Interpretation:

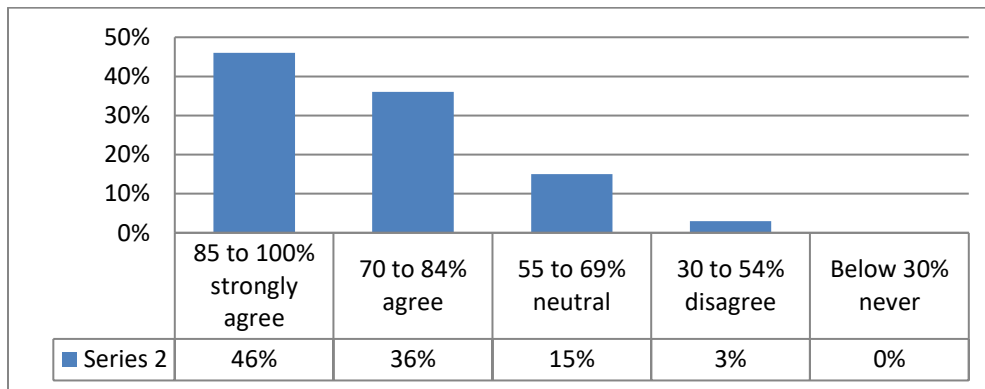
From the above table and graph, where 51% students agree with 85-100 percent every time teacher’s identify student’s weaknesses and help them to overcome it., 23% students agree with 70-84 percent usually and 26% agree to 69 percent and less occasionally and rarely.

15. The institution makes effort to engage students in monitoring, review and continuous quality improvement of the teaching learning process.

Particular	No. of Responses	Response %
85 to 100%	90	46%
70 to 84%	70	36%
55 to 69%	30	15%
30 to 54%	05	3%
Below 30%	00	0%

Analysis:

The table shows the response of students on the institution making effort to engage students in monitoring, reviewing and continuous quality improvement of the teaching learning process.



Interpretation:

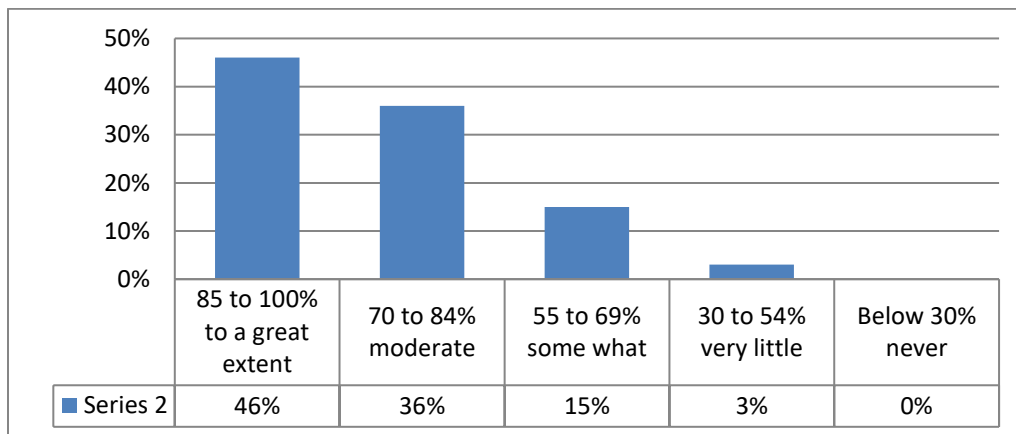
From the above table and graph, where 46% students strongly agree with 85-100 percent the institution making effort to engage students in monitoring, reviewing and continuous quality improvement of the teaching learning process., 36% students with 70-84 percent agree and the 18% agree to 69 percent and less neutral and disagree.

16. The institute/ teachers use student centric methods, such as experiential learning, participative learning and problem solving methodologies for enhancing learning experiences.

Particular	No. of Responses	Response %
85 to 100%	90	46%
70 to 84%	70	36%
55 to 69%	30	15%
30 to 54%	05	3%
Below 30%	00	0%

Analysis:

The table shows the response of students on the institute/ teachers using student centric methods, such as experiential learning, participative learning and problem solving methodologies for enhancing learning experiences.



Interpretation:

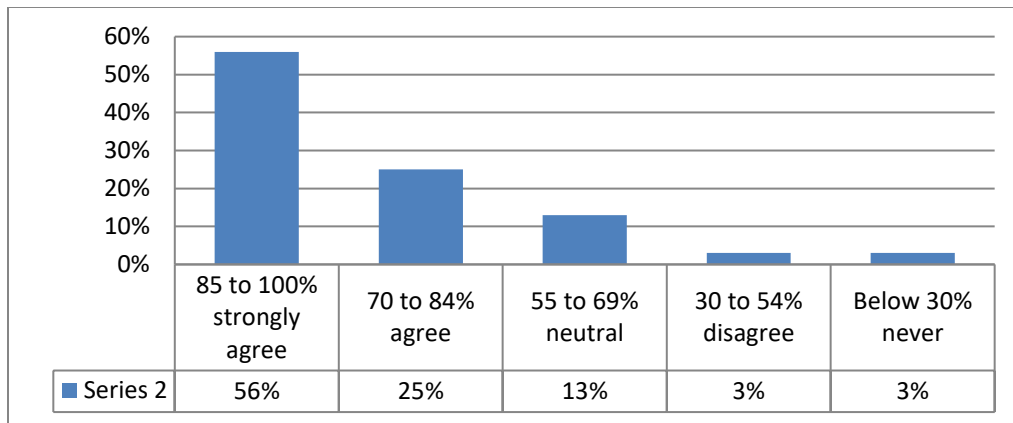
From the above table and graph, where 46% students agree with 85-100 percent to a great extent the institute/ teachers using student centric methods, such as experiential learning, participative learning and problem solving methodologies for enhancing learning experiences. 36% students agree with 70-84 percent moderately and 15% agree to 69 percent and less somewhat and very little.

17. Teachers encourage you to participate in extracurricular activities

Particular	No. of Responses	Response %
85 to 100%	110	56%
70 to 84%	50	25%
55 to 69%	25	13%
30 to 54%	05	3%
Below 30%	05	3%

Analysis:

The table shows the response of students on Teachers encouraging students to participate in extracurricular activities



Interpretation:

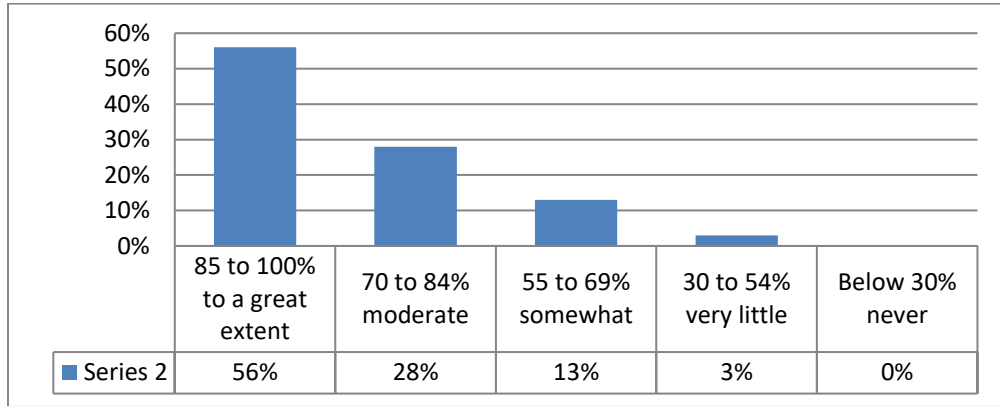
From the above table and graph, where 56% students strongly agree with 85-100 percent teachers encouraging students to participate in extracurricular activities, 25% students agree with 70-84 percent agree and 19% agree to 69 percent and less neutral and disagree.

18. Efforts are made by the institute/ teachers to inculcate soft skills, life skills and employability skills to make you ready for the world of work.

Particular		No. of Responses	Response %
85 to 100%	4 – To a great extent	110	56%
70 to 84%	3 – Moderate	55	28%
55 to 69%	2 – Some what	25	13%
30 to 54%	1 – Very little	05	3%
Below 30%	0 – Not at all	00	0%

Analysis:

The table shows the response of students on Efforts made by the institute/ teachers to inculcate soft skills, life skills and employability skills to make students ready for the world of work.



Interpretation:

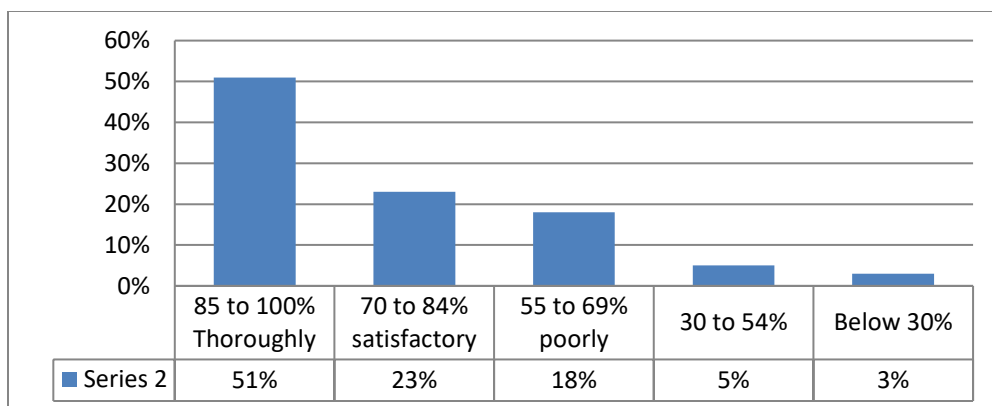
From the above table and graph, where 56% students agree with 85-100 percent to a great extent Efforts are made by the institute/ teachers to inculcate soft skills, life skills and employability skills to make students ready for the world of work, 28% students agree with 70-84 percent moderately and 18% agree to 69 percent and less somewhat and very little.

19. What percentage of teachers use ICT tools such as LCD projector, Multimedia, etc. while teaching.

Particular	No. of Responses	Response %
85 to 100%	100	51%
70 to 84%	50	23%
55 to 69%	40	18%
30 to 54%	10	5%
Below 30%	05	3%

Analysis:

The table shows the response of students on percentage of teachers use ICT tools such as LCD projector, Multimedia, etc. while teaching



Interpretation:

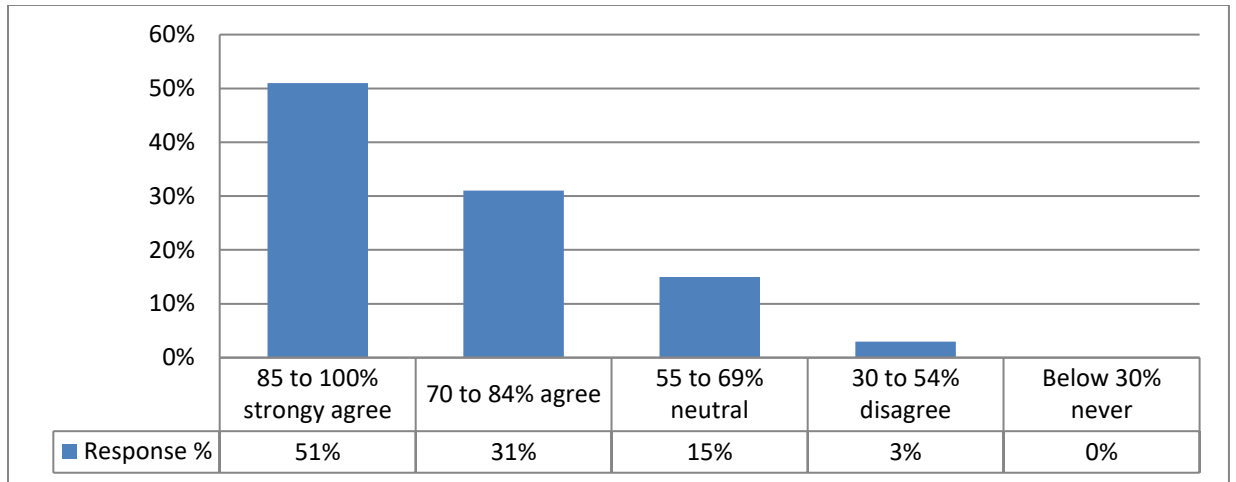
From the above table and graph, where 51% students agree with 85-100 percent thoroughly the teachers use ICT tools such as LCD projector, Multimedia, etc. while teaching, 23% students agree with 70-84 percent satisfactory and 18% agree to 69 percent and less poorly.

20. The overall quality of teaching-learning process in your institute is very good.

Particular	No. of Responses	Response %
85 to 100%	100	51%
70 to 84%	60	31%
55 to 69%	30	15%
30 to 54%	05	3%
Below 30%	00	0%

Analysis:

The table shows the response of students on the overall quality of teaching-learning process in the institute.



Interpretation:

From the above table and graph, where 51% students agree with 85-100 percent strongly agree that the overall quality of teaching-learning process in the institute is great, 31% students agree with 70-84 percent agree and 18% agree to 69 percent and less neutral and disagree.