

Seshadripuram Educational Trust

SESHADRIPURAM ACADEMY OF BUSINESS STUDIES

(Affiliated to Bangalore University)

NAAC Accredited 'B' Grade

Kengeri Satellite Town, Bengaluru- 560060.

STUDENT SATISFACTION SURVEY

(2019-20)

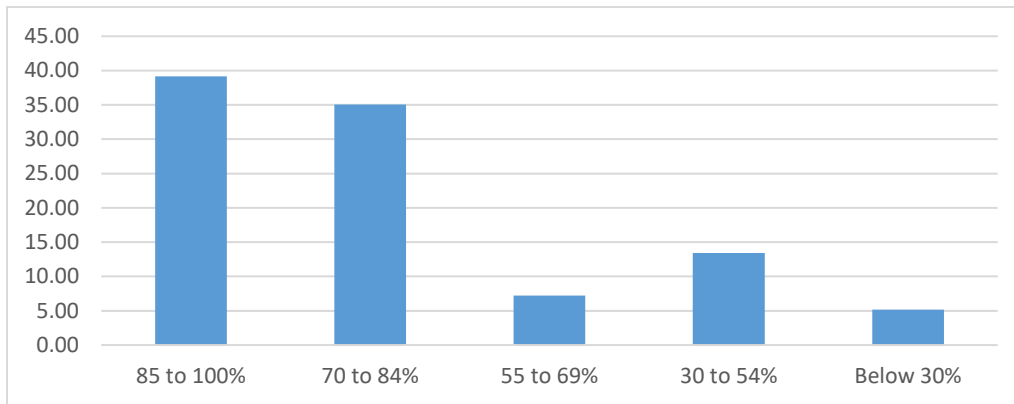
1. How much of the syllabus was covered in the class?

Particular	Response %	No. of Responses
85 to 100%	39.18	76
70 to 84%	35.05	68
55 to 69%	7.22	14
30 to 54%	13.40	26
Below 30%	5.15	10

Total Responses: 194

Mean Score:	3.9
-------------	------------

*Mean Score out of 5 points scale



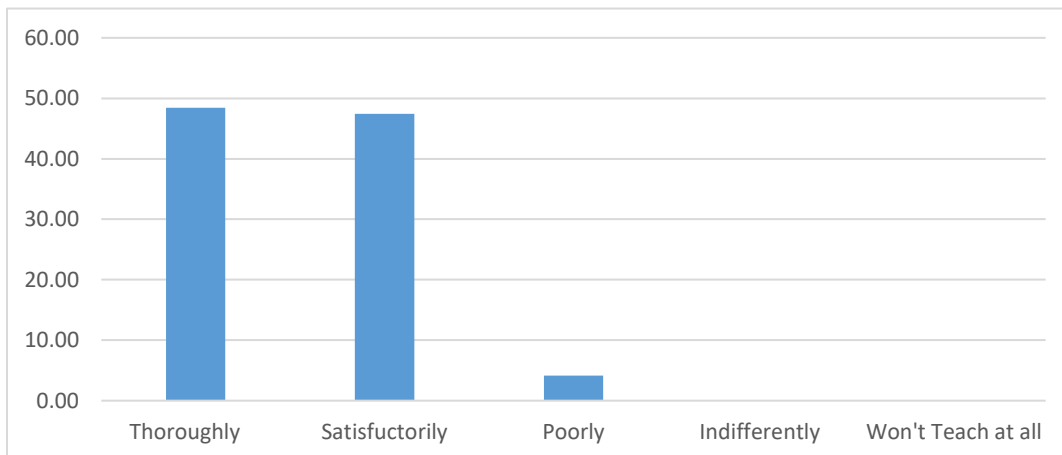
2. How well did the teachers prepare for the classes?

Particular	Response %	No. of Responses
Thoroughly	48.45	94
Satisfactorily	47.42	92
Poorly	4.12	8
Indifferently	0.00	0
Won't Teach at all	0.00	0

Total Responses: 194

Mean Score:	4.44
-------------	-------------

*Mean Score out of 5 points scale



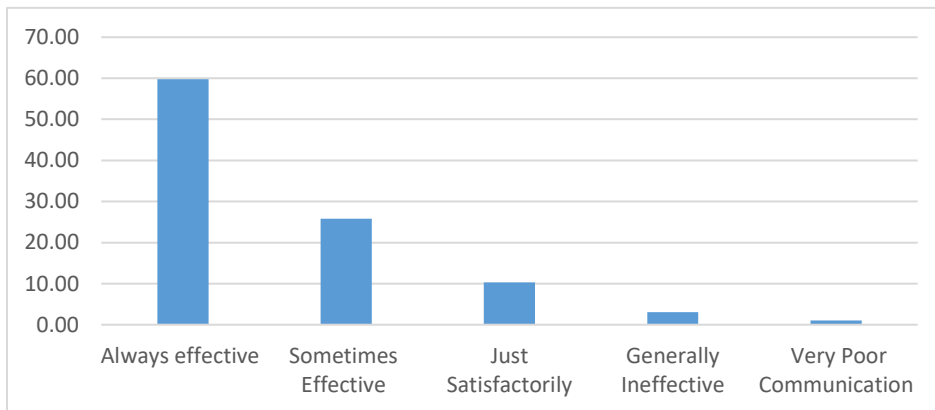
3. How well were the teachers able to communicate?

Particular	Response %	No. of Responses
Always effective	59.79	116
Sometimes Effective	25.77	50
Just Satisfactorily	10.31	20
Generally Ineffective	3.09	6
Very Poor Communication	1.03	2

Total Responses: 194

Mean Score:	4.4
-------------	------------

*Mean Score out of 5 points scale



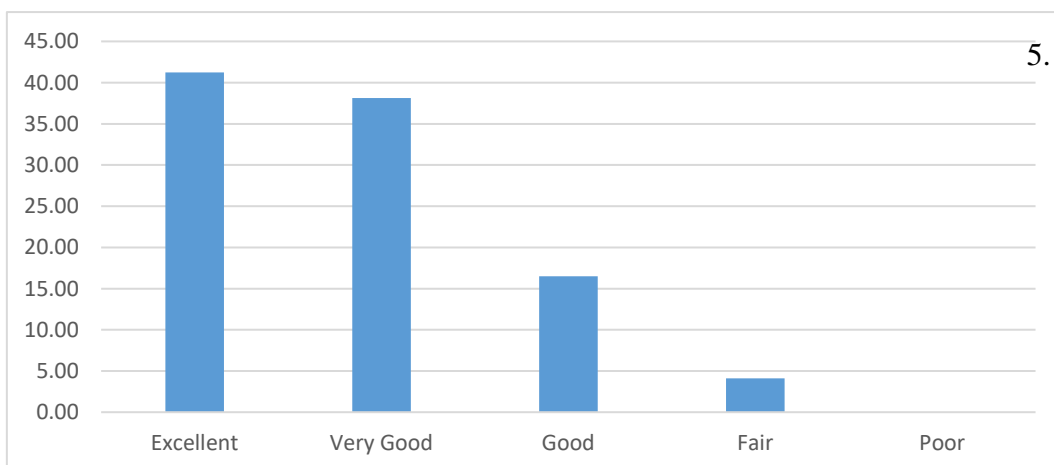
4. The teacher's approach to teaching can best be described as

Particular	Response %	No. of Responses
Excellent	41.24	80
Very Good	38.14	74
Good	16.49	32
Fair	4.12	8
Poor	0.00	0

Total Responses: 194

Mean Score:	4.16
-------------	-------------

*Mean Score out of 5 points scale



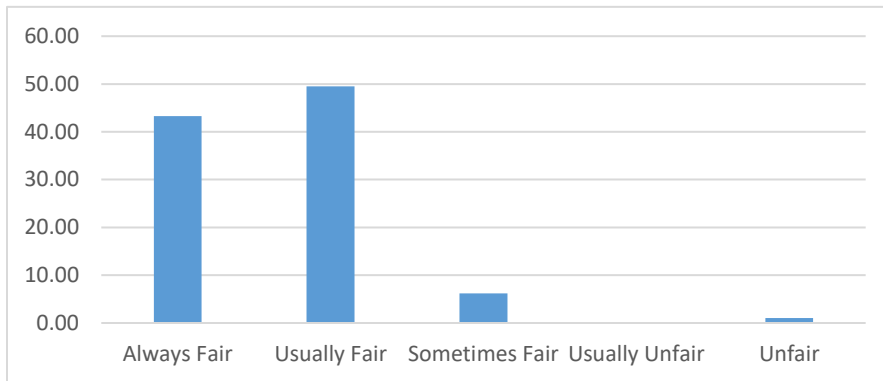
5. Fairness of the internal evaluation process by the teachers.

Particular	Response %	No. of Responses
Always Fair	43.30	84
Usually Fair	49.48	96
Sometimes Fair	6.19	12
Usually Unfair	0.00	0
Unfair	1.03	2

Total Responses: 194

Mean Score:	4.34
-------------	-------------

*Mean Score out of 5 points scale



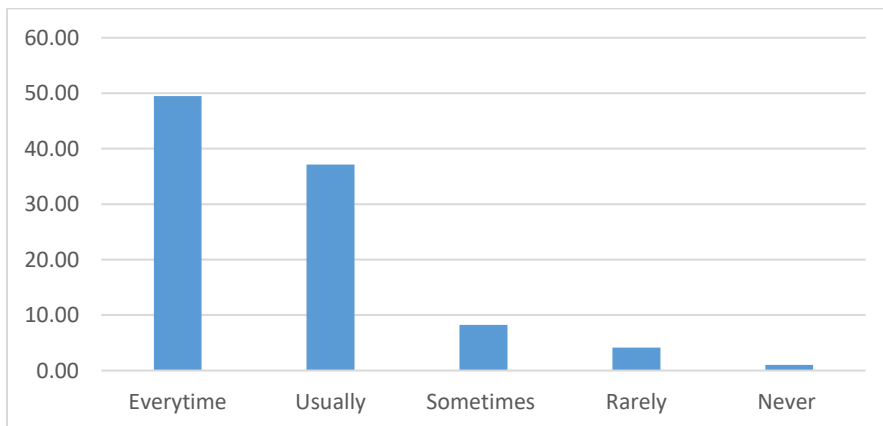
5. Was your performance in assignments discussed with you?

Particular	Response %	No. of Responses
Every time	49.48	96
Usually	37.11	72
Sometimes	8.25	16
Rarely	4.12	8
Never	1.03	2

Total Responses: 194

Mean Score:	4.29
-------------	-------------

*Mean Score out of 5 points scale



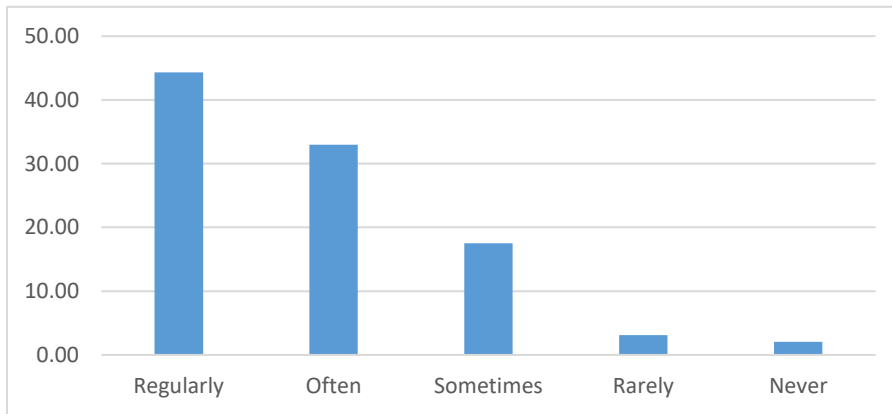
6. The institute takes active interest in promoting internship, student exchange, Field visit opportunities for students.

Particular	Response %	No. of Responses
Regularly	44.33	86
Often	32.99	64
Sometimes	17.53	34
Rarely	3.09	6
Never	2.06	4

Total Responses: 194

Mean Score:	4.14
-------------	-------------

*Mean Score out of 5 points scale



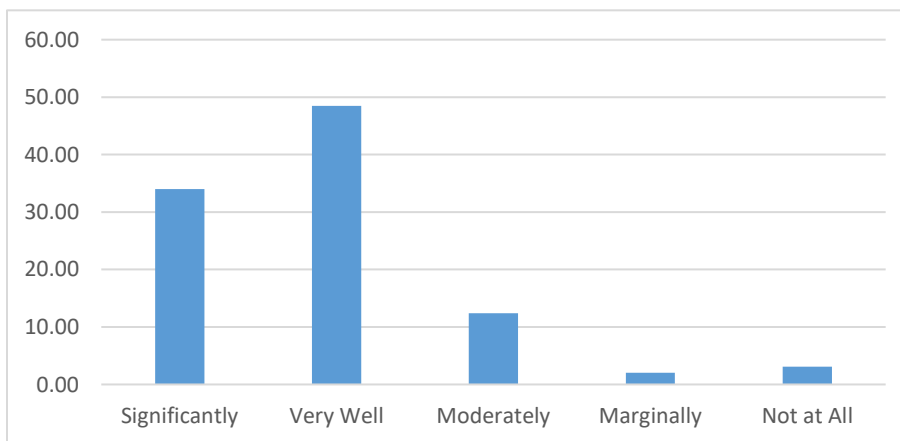
7. The teaching and mentoring process in your institution facilitates you in cognitive, social and emotional growth.

Particular	Response %	No. of Responses
Significantly	34.02	66
Very Well	48.45	94
Moderately	12.37	24
Marginally	2.06	4
Not at All	3.09	6

Total Responses: 194

Mean Score:	4.08
-------------	-------------

*Mean Score out of 5 points scale



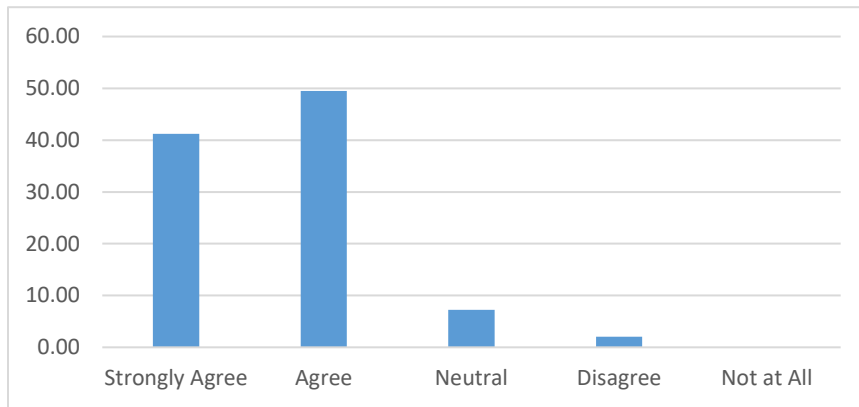
8. The institution provides multiple opportunities to learn and grow.

Particular	Response %	No. of Responses
Strongly Agree	41.24	80
Agree	49.48	96
Neutral	7.22	14
Disagree	2.06	4
Not at All	0.00	0

Total Responses: 194

Mean Score:	4.29
-------------	-------------

*Mean Score out of 5 points scale



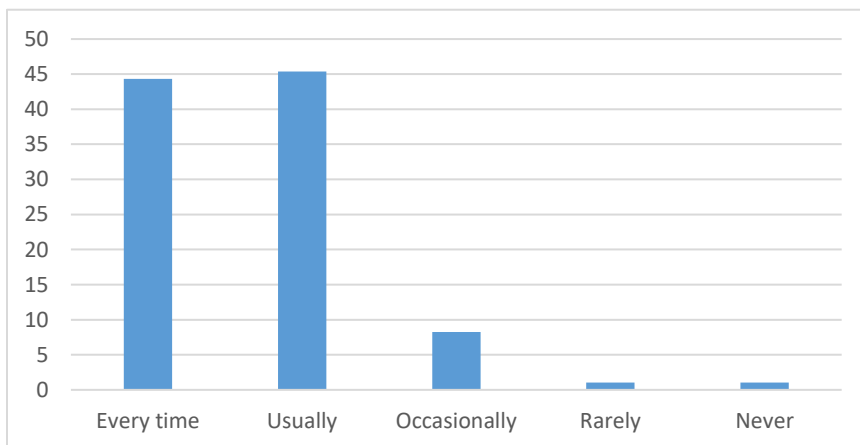
9. Teachers inform you about your expected competencies, course outcomes and Programme outcomes.

Particular	Response %	No. of Responses
Every time	44.33	86
Usually	45.36	88
Occasionally	8.25	16
Rarely	1.03	2
Never	1.03	2

Total Responses: 194

Mean Score:	4.3
-------------	------------

*Mean Score out of 5 points scale



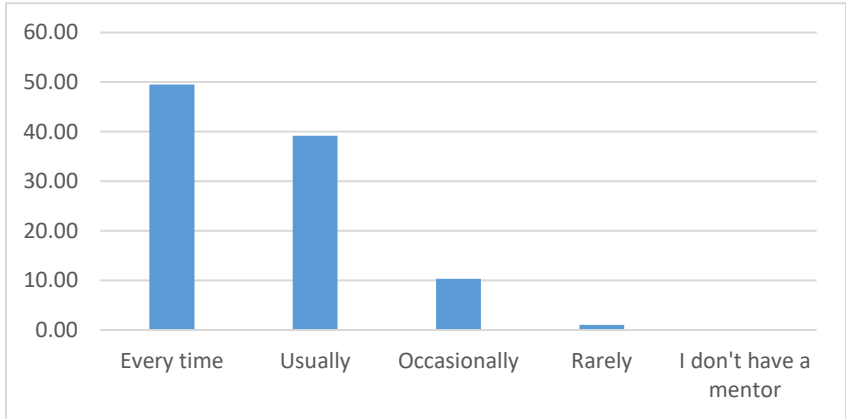
10. Your mentor does a necessary follow-up with an assigned task to you.

Particular	Response %	No. of Responses
Every time	49.48	96
Usually	39.18	76
Occasionally	10.31	20
Rarely	1.03	2
I don't have a mentor	0.00	0

Total Responses: 194

Mean Score:	4.37
-------------	-------------

*Mean Score out of 5 points scale



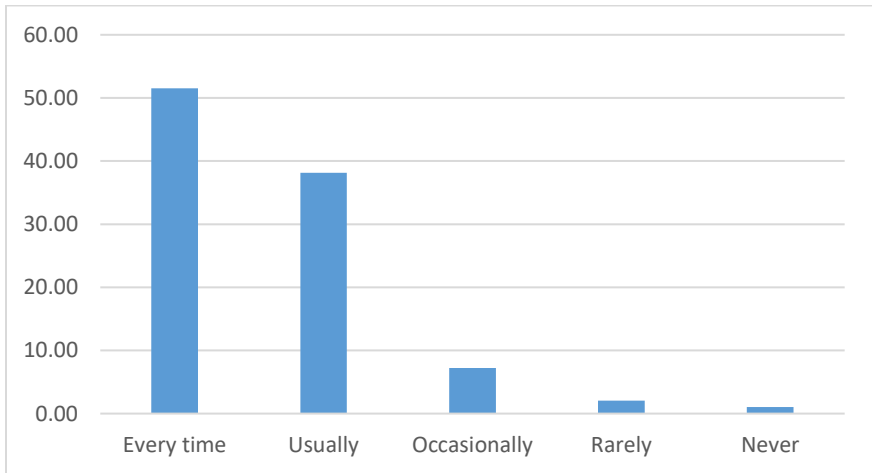
11. The teachers illustrate the concepts through examples and applications.

Particular	Response %	No. of Responses
Every time	51.55	100
Usually	38.14	74
Occasionally	7.22	14
Rarely	2.06	4
Never	1.03	2

Total Responses: 194

Mean Score:	4.37
-------------	-------------

*Mean Score out of 5 points scale



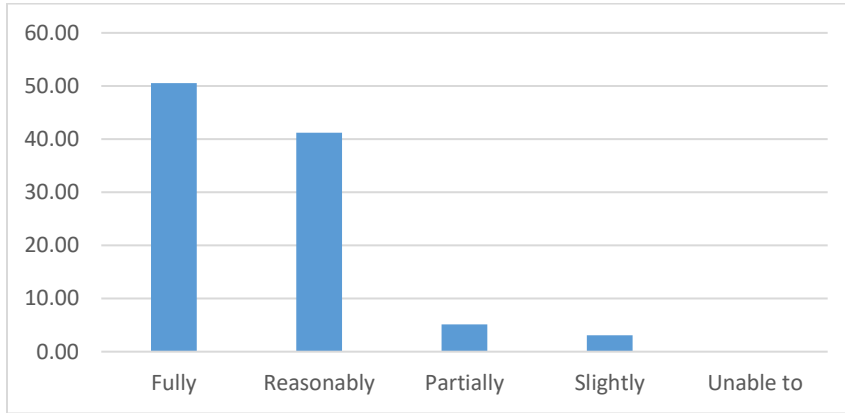
12. The teachers identify your strengths and encourage you with providing right level of challenges.

Particular	Response %	No. of Responses
Fully	50.52	98
Reasonably	41.24	80
Partially	5.15	10
Slightly	3.09	6
Unable to	0.00	0

Total Responses: 194

Mean Score:	4.39
-------------	-------------

*Mean Score out of 5 points scale



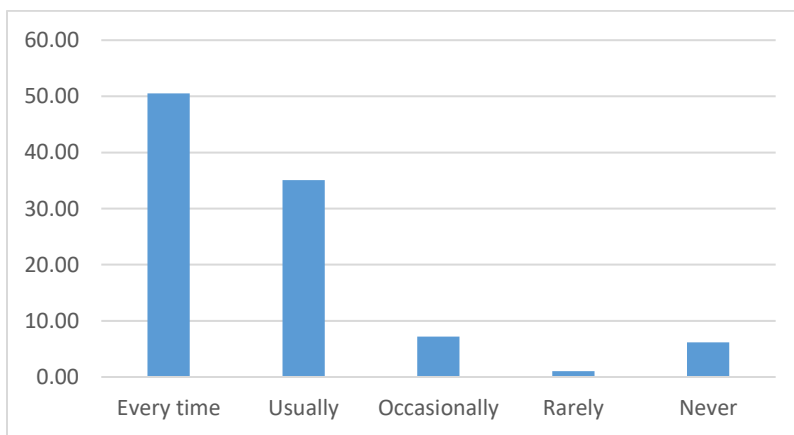
13. Teachers are able to identify your weaknesses and help you to overcome them.

Particular	Response %	No. of Responses
Every time	44.33	86
Usually	39.18	76
Occasionally	8.25	16
Rarely	3.09	6
Never	5.15	10

Total Responses: 194

Mean Score:	4.14
-------------	-------------

*Mean Score out of 5 points scale



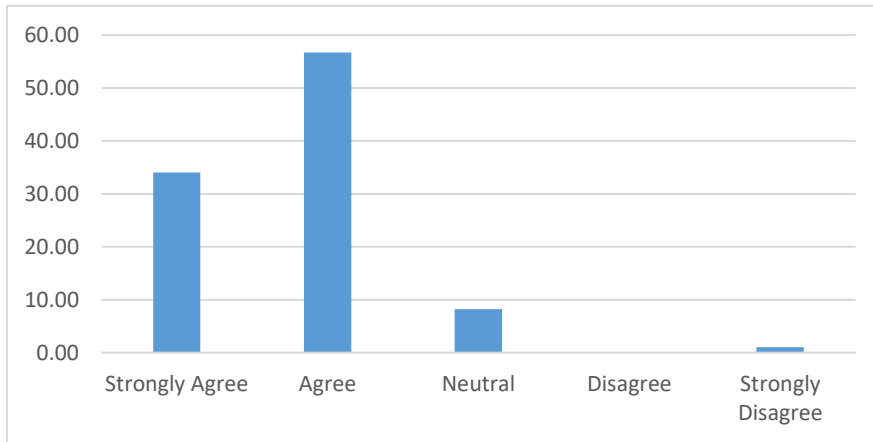
14. The institution makes effort to engage students in the monitoring, review and continuous quality improvement of the teaching learning process.

Particular	Response %	No. of Responses
Strongly Agree	34.02	66
Agree	56.70	110
Neutral	8.25	16
Disagree	0.00	0
Strongly Disagree	1.03	2

Total Responses: 194

Mean Score:	4.29
-------------	-------------

*Mean Score out of 5 points scale



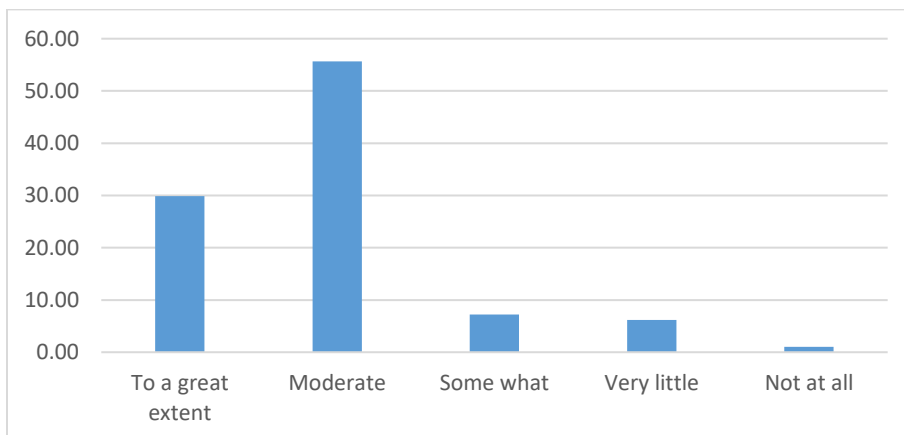
15. The institute/ teachers use student centric methods, such as experiential learning, participative learning and problem solving methodologies for enhancing learning.

Particular	Response %	No. of Responses
To a great extent	29.90	58
Moderate	55.67	108
Some what	7.22	14
Very little	6.19	12
Not at all	1.03	2

Total Responses: 194

Mean Score:	4.07
-------------	-------------

*Mean Score out of 5 points scale



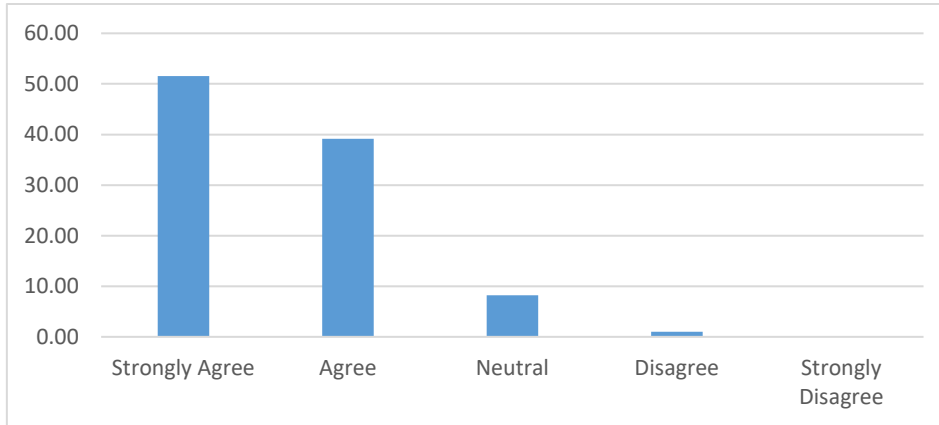
16. Teachers encourage you to participate in extracurricular activities.

Particular	Response %	No. of Responses
Strongly Agree	51.55	100
Agree	39.18	76
Neutral	8.25	16
Disagree	1.03	2
Strongly Disagree	0.00	0

Total Responses: 194

Mean Score:	4.41
-------------	-------------

*Mean Score out of 5 points scale



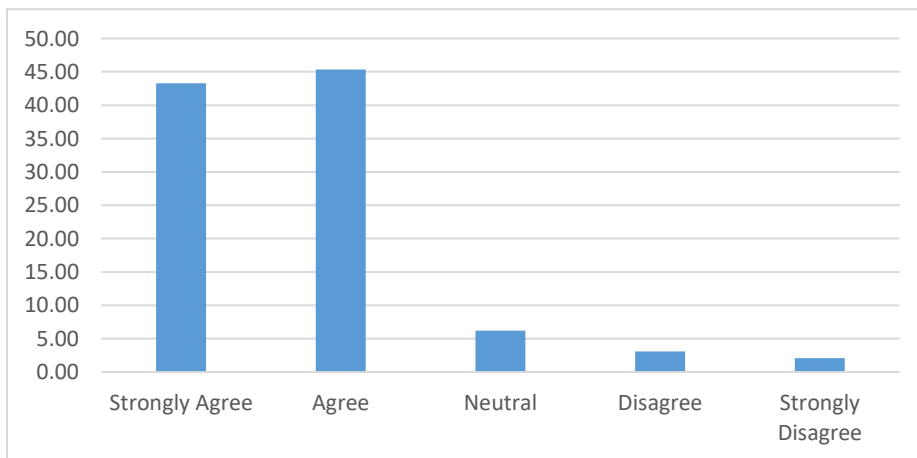
17. Efforts are made by the institute/ teachers to inculcate soft skills, life skills and employability skills to make you ready for the world of work.

Particular	Response %	No. of Responses
Strongly Agree	43.30	84
Agree	45.36	88
Neutral	6.19	12
Disagree	3.09	6
Strongly Disagree	2.06	4

Total Responses: 194

Mean Score:	4.24
-------------	-------------

*Mean Score out of 5 points scale



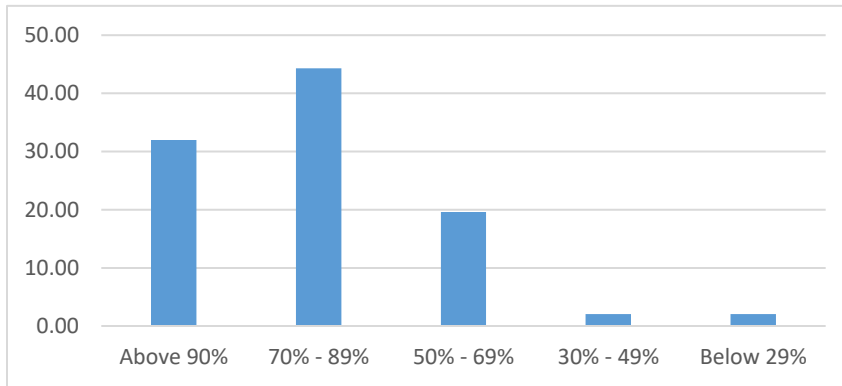
18. What percentage of teachers use ICT tools such as LCD projector, Multimedia, etc. while teaching?

Particular	Response %	No. of Responses
Above 90%	31.96	62
70% - 89%	44.33	86
50% - 69%	19.59	38
30% - 49%	2.06	4
Below 29%	2.06	4

Total Responses: 194

Mean Score:	4.02
-------------	-------------

*Mean Score out of 5 points scale



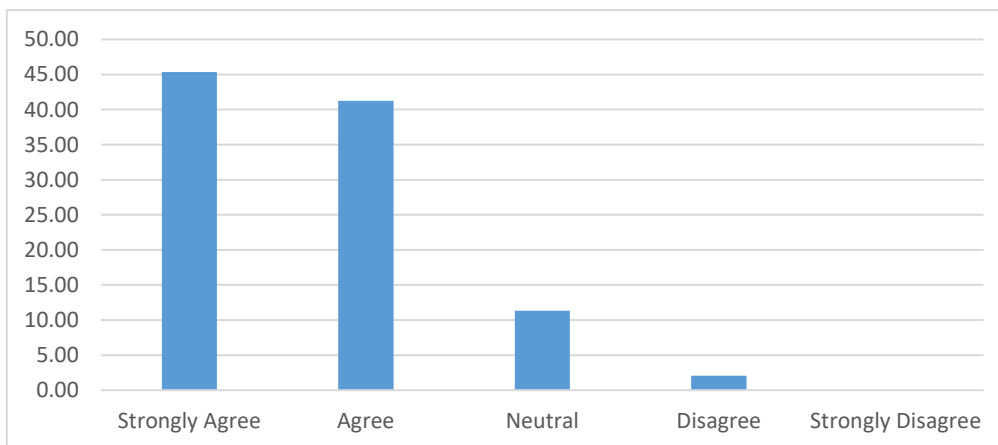
19. The overall quality of teaching-learning process in your institute is very good

Particular	Response %	No. of Responses
Strongly Agree	45.36	88
Agree	41.24	80
Neutral	11.34	22
Disagree	2.06	4
Strongly Disagree	0.00	0

Total Responses: 194

Mean Score:	4.02
-------------	-------------

*Mean Score out of 5 points scale



OVERALL MEAN SCORE – 4.237

Out of 5 points scale

OBSERVATION/SUGGESTIONS TO IMPROVE THE OVERALL TEACHING
LEARNING EXPERIENCE IN THE INSTITUTION (Based on students' response to the
open ended qualitative question no. 21)